

Fair Food WA

Janine Freeman
FFWA Independent Chair

Ashleigh Gregory
Community Relief and Resilience Coordinator



FAIR FOOD WA MEMBERSHIP



Government of Western Australia
Department of Communities



Government Supporters

- Government of Western Australia – Department of Health
- Government of Western Australia – Department of Premier and Cabinet
- Australian Government – Department of Social Services

WA LEADING THE NATION






<https://www.youtube.com/watch?v=s3XpLhFTsX4>

WHAT IS THE ISSUE?



Tens  of millions spent on food relief

4x per year



the average amount of time a person can **seek assistance**

almost **2/3** 

Australians in regional and remote areas **feel stressed** as a result of not having enough food

more than **7,000** **people** turned away from food relief each year



26% higher price

of a "**basket of food**" in remote community stores

710,000 **people**  rely on food relief each month

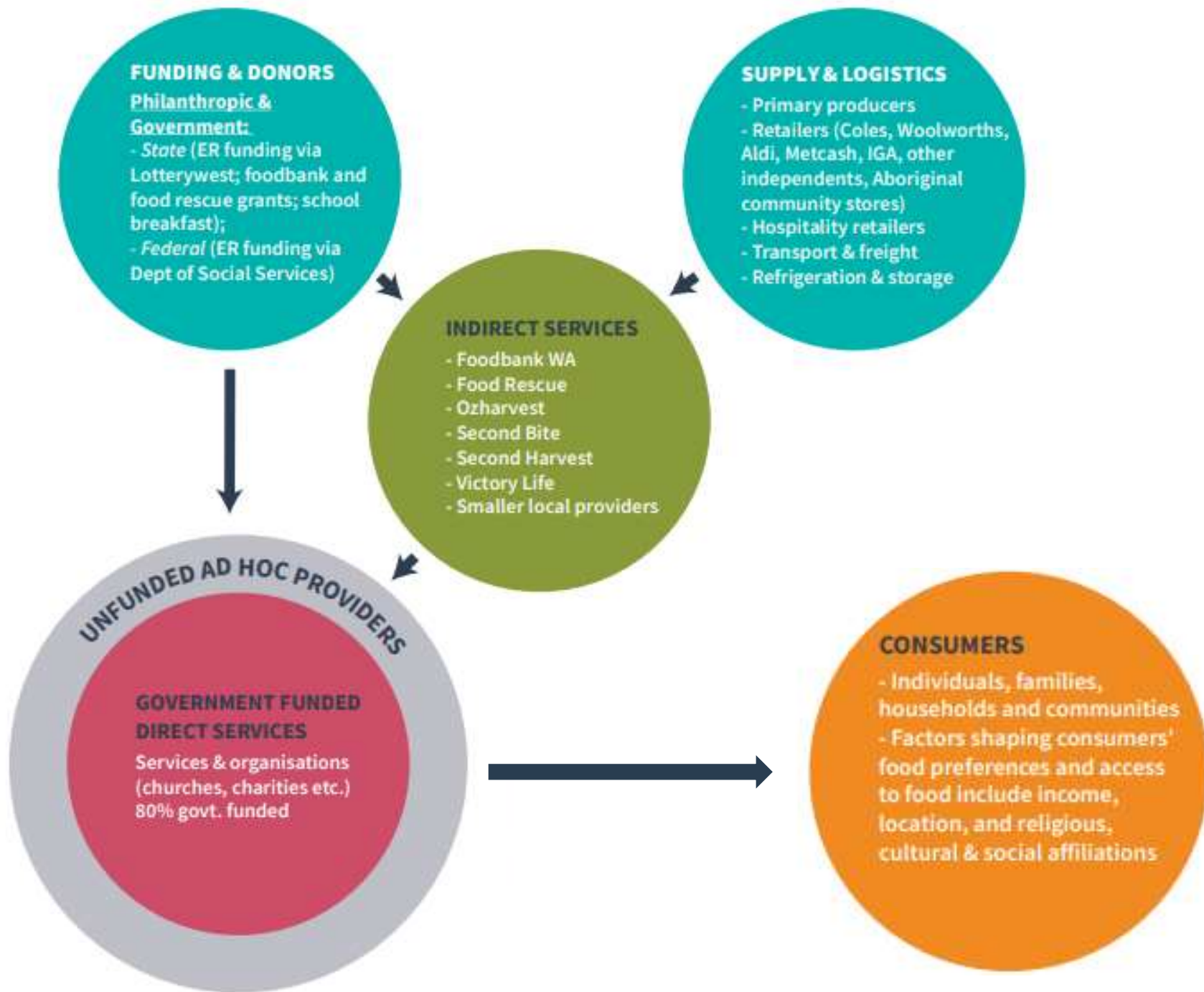
65% 

of emergency relief is estimated to be **spent on food**



reliance on charity food: **7.5** years on average

Data from 2019 Framework



RELATED INSTITUTIONS

- Academic institutions
- Departments of Justice, Communities, Health, Education and so on
- Local government
- Centrelink
- Government reforms

RELATED SUPPORTS

- Financial counselling
- Family & domestic violence
- Homelessness services
- Education & employment
- Unions

KEY ACHIEVEMENTS & OUR RESPONSE TO COVID

The Food Relief Framework has already established some key platforms, tools and resources to better respond to the need, including:

- **The Food Relief Roundtable:** The WA Premier hosted key players from the all levels of civil society in discussions on how to improve, measure, monitor and the accountability for food relief.
- **Food Stress Index:** A prototype that can geographically map food insecurity risks across the State, identifying areas of need and the extent of food insecurity in Western Australia.
- **Community Organised Resource Exchange (CORE):** Enabling the sharing of food, materials and logistics between local businesses and not for profit sectors, through community updating.
- **Clearinghouse Subcommittee:** The sub-committee successfully coordinated and distributed 108 pallets of food across 22,694 km, providing food to over 47,360 thousand people who were left at risk of food insecurity due to COVID-19.
- **Strengthened network of service providers** to map the issue and identify solutions to address gaps in the State's food security system.

Food Stress Index

Legend

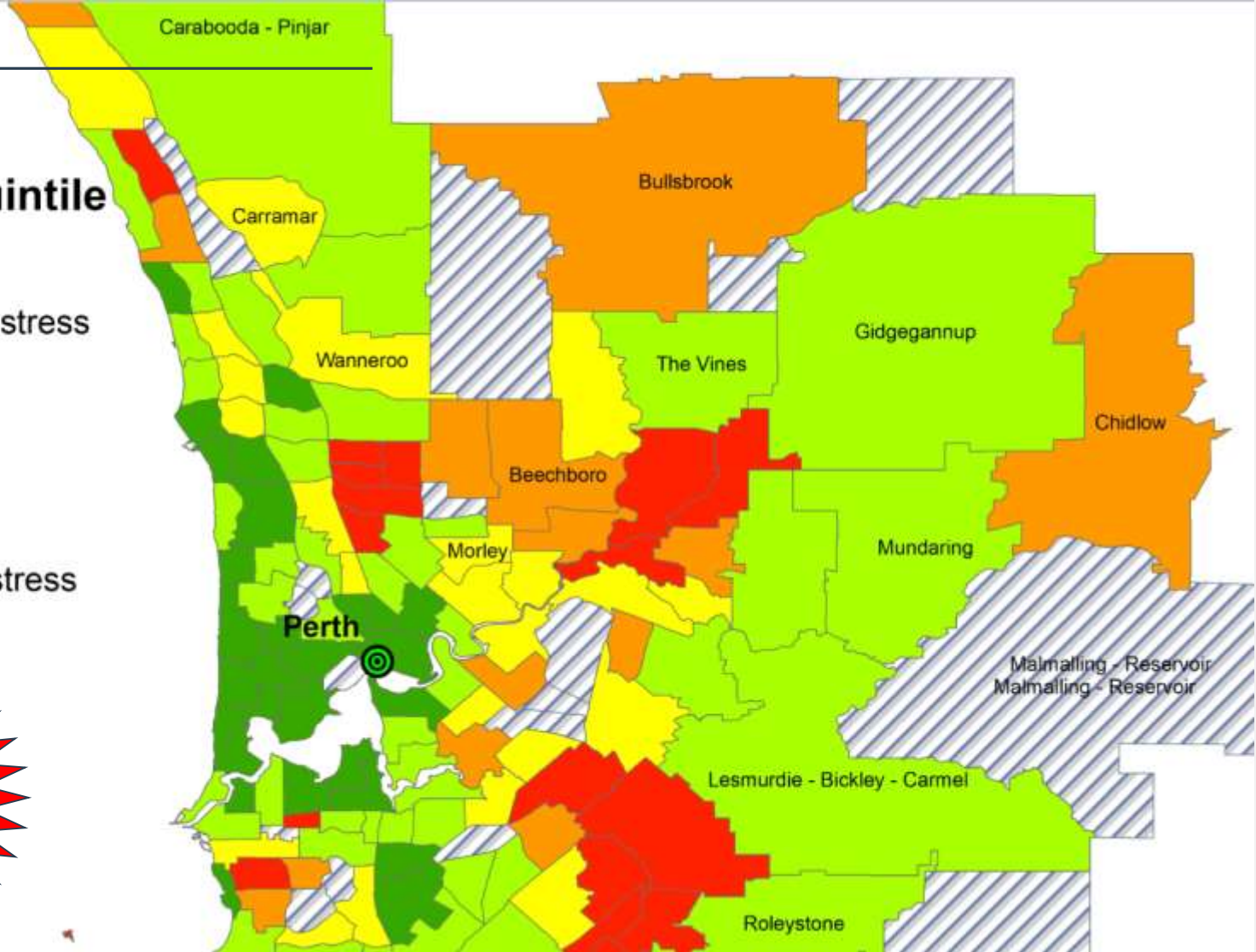
📍 Towns


Food Stress Index - Quintile

FSI quintile

- 🟢 Least likelihood of food stress
- 🟡 2
- 🟠 3
- 🔴 4
- 🔴 High likelihood of food stress
- 📏 No data

30% WA families >200,000





Food Stress	Suburb	Food Stress Index	Households at risk (%)
	North Coogee	823	2.3
	Mount Hawthorn	890	2.3
	Fremantle	950	16
	Halls Head	995	16
	Rockingham	1,034	50
	Mandurah	1,095	50
	Balga / Mirrabooka	1,110	84
	Armadale	1,128	84
	East Pilbara	1,394	99

COMMUNITY ORGANISED RESOURCE EXCHANGE



CORE
Community Organised
Resource Exchange



Choose what you want to do on CORE



I want to
search

Click here to search for shared
resources or donations from other
organisations



I want to
donate

Click here to donate or share resources and
items that could help other organisations

What are you looking for?

Let's select the nearest matching category for the listing/items you are looking for.
Below you can see a list of categories with a description and what you can find in them. Click on one of them to start searching.



Food

Such as surplus perishable and non-perishable items, CORE can match your donated food with a local charity food provider. The CORE food categories are recorded on the Australian dietary guidelines.



Material Aid

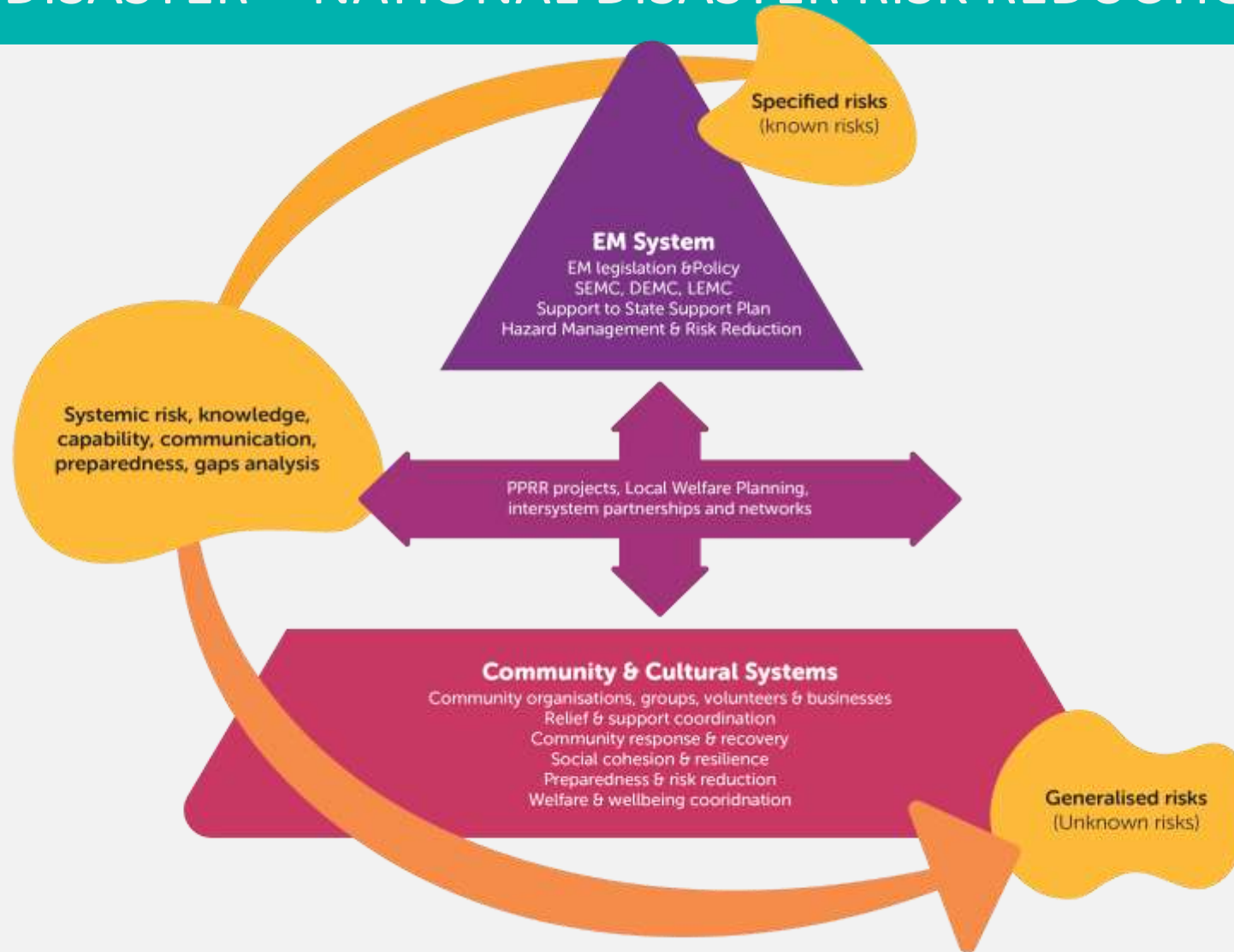
Such as machinery, furniture, garden equipment, and clothing, CORE can match your donation with a charity service who will distribute these to local families in need.



Logistics

Such as cold and dry storage, commercial kitchens, meeting rooms and hot desks, CORE can match your extra logistic resources with a charity who will use them for the benefit of local communities.

FOOD IN A DISASTER – NATIONAL DISASTER RISK REDUCTION PROJECT



COMMUNITY, CAPACITY, COLLABORATION, AND CAPABILITY



- Are we ok with food being a discretionary spend or is it a human right issue?
- Should we rely on organisations to meet community food needs through donations?
- How do we build resilience of those seeking food relief?
- How do we ensure healthy surplus food is redirected efficiently?